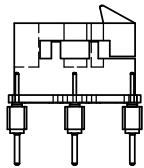
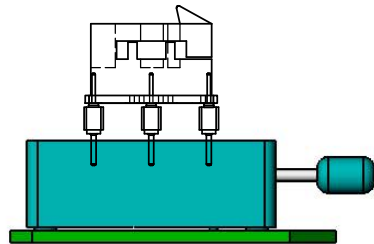


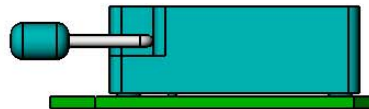
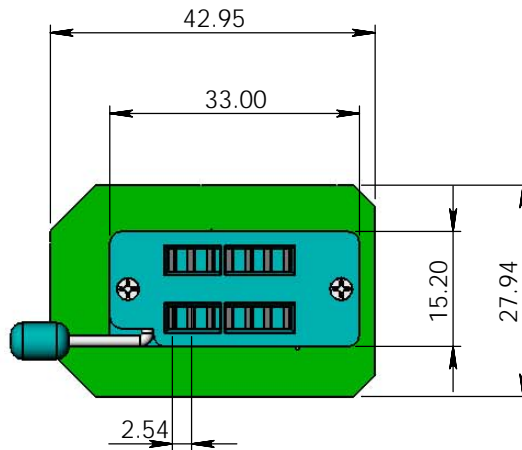
| REV. | REVISION NOTE | DATE | CHECKED |
|------|---------------|------|---------|
| △ | | | |



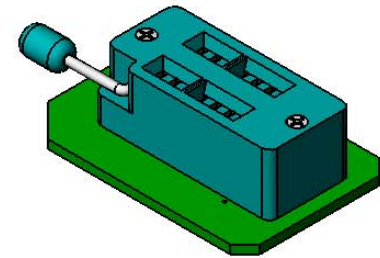
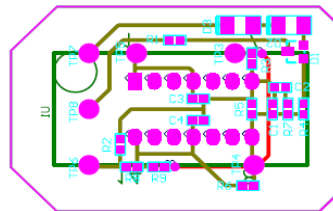
X5-Axx




使用範例



XH-xxxx



| P/N. | TYPE |
|-----------------|------------------|
| XH-CS-10k+10Pf | CS 10K/10PF |
| XH-CMOS-15pf | CMOS 15PF |
| XH-CMOS-20pf | CMOS 20PF |
| XH-CMOS-30pf | CMOS 30PF |
| XH-CMOS-50pf | CMOS 50PF |
| XH-PECL-3.3V-50 | 3.3V PECL 50 Ohm |
| XH-PECL-3.3V-95 | 3.3V PECL 95 Ohm |
| XH-PECL-3.3V-20 | 3.3V PECL 20 Ohm |
| XH-PECL-5V-50 | 5V PECL 50 Ohm |
| XH-PECL-5V-95 | 5V PECL 95 Ohm |
| XH-PECL-5V-20 | 5V PECL 20 Ohm |
| XH-PECL-2.5V-50 | 2.5V PECL 50 Ohm |
| XH-PECL-2.5V-95 | 2.5V PECL 95 Ohm |
| XH-PECL-2.5V-20 | 2.5V PECL 20 Ohm |
| XH-2TTL | 2TTL |
| XH-5TTL | 5TTL |
| XH-10TTL | 10TTL |

| | | | | | | | | |
|--|-------------|--|--------------|--|--|---------------|----------|--|
|  | TITLE | | 280A Sockets | | <div>AFORCE</div> <div>優力精密工業有限公司</div> <div>TEL:886-3-6571238</div> <div>FAX:886-2-81926187</div> | | | |
| | DWG NO. | | XH-XXXX | | | REV. | A | |
| | MATERIAL | | | | | PAPER | A4 | |
| | UNIT: mm | | SCALE: 2:1 | | | SHEET: 1 of 1 | | |
| <div>XXX. ±0.5</div> <div>XX. ±0.3</div> <div>X. ±0.2</div> <div>.X ±0.1</div> <div>.XX ±0.05</div> <div>ANGLES ±1/4°</div> <div>DRILL HOLD +0.15 / -0</div> | APPROVAL | | DATE | | DESIGNER | | DATE | |
| | Steven Yang | | 08/12/19 | | Max Lu | | 08/12/19 | |